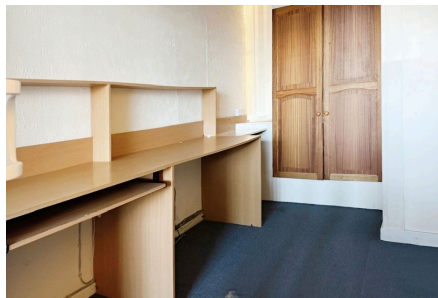


Ground Floor Shop, 2 Rhyl Road, Rhuddlan, Denbighshire LL18 2TR

£60,000

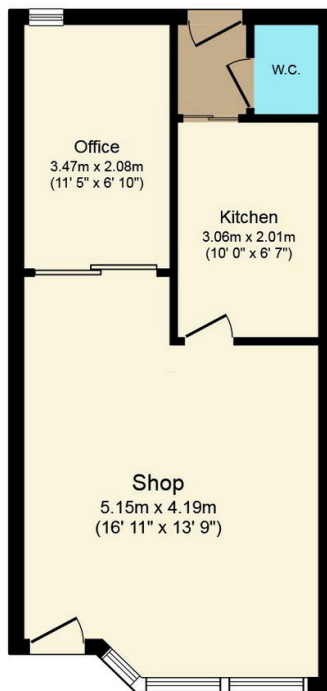
🛏 0 🚗 1 🛋 0



This ground floor shop premises occupies a prominent corner position and stand close to the centre of this popular historic village. Rhuddlan boasts a wide array of shops and services and is conveniently placed for access to the A55 expressway. The property comprises a ground floor retail shop with office and sales area. It has been successfully utilised as a travel agency for a number of years and now provides an opportunity for the discerning buyer to acquire a Freehold property in a prime location.

Key Features

- SHOP PREMISES
- EXCELLENT DISPLAY WINDOW
- SEPARATE KITCHEN AND OFFICE
- GOOD ACCESS TO THE A55
- COMMERCIAL EPC - D-95
- PRIME LOCATION
- POPULAR VILLAGE LOCATION
- PREVIOUSLY A TRAVEL AGENTS
- FREEHOLD
- COUNCIL TAX BAND - tbc



Floor Plan

Total floor area 38.0 m² (410 sq.ft.) approx

This plan is for illustration purposes only and may not be representative of the property. Plan not to scale. Powered by PropertyBox